

# CHAIN BRACKET

## CHAIN BRACKET

is a fastening system for installation of telecom equipment or other type of equipment on monopoles or round poles.

## FLEXIBILITY

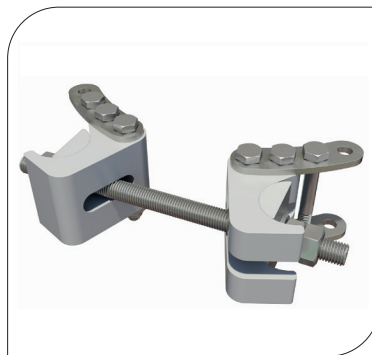
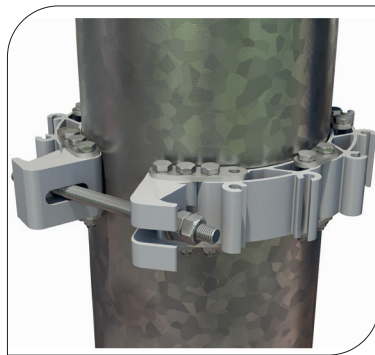
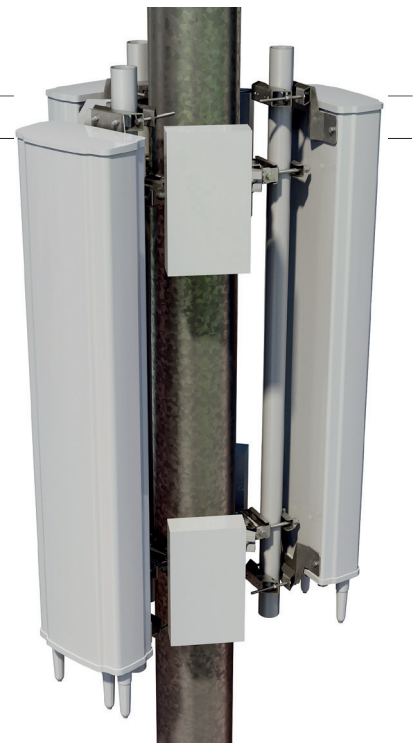
The Chain Bracket can be installed on any pole from Ø110 mm up to Ø1000 mm. A wide range of accessory mounts are available for mounting tubes, RRU:s, filters etc. even for compensation of inclination when installing on conical monopoles.

## QUALITY

All components are made of anodized aluminum and acid proof stainless steel which gives the support excellent corrosion resistance.

## EASY ASSEMBLY

Handling and installation is very easy because of its light weight but also thanks to the pre-assembled kit system and the facile tightening process.



## ORDER AND TECHNICAL INFORMATION

DRAWING NO: CD 991019

FUNCTION DESCRIPTION: The chain bracket is an innovative mounting solution for large poles, chimneys etc. with a diameter over Ø110 mm. It comes with a full range of accessories such as brackets for RRU's, antennas, filters etc.

### MECHANICAL DATA

Link and tensioner profiles: Aluminum, nature anodized 20µm  
Link plates and fasteners: Acid proof stainless steel

PERFORMANCE FOR TWO LEVELS	OPERATIONAL WIND SPEED			MAX SIDE WIND AREA **		MAX LOAD WEIGHT **	
	km/h	m/s	mph	m <sup>2</sup>	ft <sup>2</sup>	kg	lb
	240	67	150	0,4	4,3	330	730
	210	58	130	0,5	5,5	330	730
	180	50	112	0,7	7,5	330	730
	150	42	93	1,0	11	330	730
	120	33	75	1,5	16	330	730

\*) Max side wind area for each mounted equipment

\*\*) Nominal values, performance also depends on shape and size

PACKAGE DIMENSIONS	LENGTH		WIDTH		HEIGHT		WEIGHT	
	mm	(in)	mm	(in)	mm	(in)	kg	(lb)
	385	(15)	140	(5,5)	90	(3,6)	3,0	(6,6)